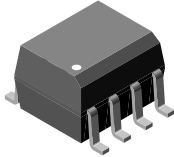
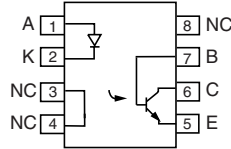


## Optocoupler, Phototransistor Output, with Base Connection in SOIC-8 Package



1179002



### DESCRIPTION

The IL205AT/IL206AT/IL207AT/IL208AT are optically coupled pairs with a gallium arsenide infrared LED and a silicon NPN phototransistor. Signal information, including a DC level, can be transmitted by the device while maintaining a high degree of electrical isolation between input and output. This family comes in a standard SOIC-8A small outline package for surface mounting which makes them ideally suited for high density application with limited space. In addition to eliminating through-hole requirements, this package conforms to standards for surface mounted devices.

A specified minimum and maximum CTR allows a narrow tolerance in the electrical design of the adjacent circuits. The high  $BV_{CEO}$  of 70 V gives a higher safety margin compared to the industry standard 30 V.

### FEATURES

- High  $BV_{CEO}$ , 70 V
- Isolation test voltage, 4000  $V_{RMS}$
- Industry standard SOIC-8A surface mountable package
- Compatible with dual wave, vapor phase and IR reflow soldering
- Lead (Pb)-free component
- Component in accordance to RoHS 2002/95/EC and WEEE 2002/96/EC



**RoHS**  
COMPLIANT

### AGENCY APPROVALS

- UL1577, file no. E52744 system code Y
- CUL - file no. E52744, equivalent to CSA bulletin 5A
- DIN EN 60747-5-5 available with option 1

| ORDER INFORMATION |                          |
|-------------------|--------------------------|
| PART              | REMARKS                  |
| IL205AT           | CTR 40 to 80 %, SOIC-8   |
| IL206AT           | CTR 63 to 125 %, SOIC-8  |
| IL207AT           | CTR 100 to 200 %, SOIC-8 |
| IL208AT           | CTR 160 to 320 %, SOIC-8 |

# IL205AT/206AT/207AT/208AT



Vishay Semiconductors Optocoupler, Phototransistor Output,  
with Base Connection in SOIC-8 Package

| ABSOLUTE MAXIMUM RATINGS                     |                    |               |               |           |
|----------------------------------------------|--------------------|---------------|---------------|-----------|
| PARAMETER                                    | TEST CONDITION     | SYMBOL        | VALUE         | UNIT      |
| <b>INPUT</b>                                 |                    |               |               |           |
| Peak reverse voltage                         |                    | $V_R$         | 6             | V         |
| Forward continuous current                   |                    | $I_F$         | 60            | mA        |
| Power dissipation                            |                    | $P_{diss}$    | 90            | mW        |
| Derate linearly from 25 °C                   |                    |               | 1.2           | mW/°C     |
| <b>OUTPUT</b>                                |                    |               |               |           |
| Collector emitter breakdown voltage          |                    | $BV_{CEO}$    | 70            | V         |
| Emitter collector breakdown voltage          |                    | $BV_{ECO}$    | 7             | V         |
| Collector-base breakdown voltage             |                    | $BV_{CBO}$    | 70            | V         |
| $I_{CMAX DC}$                                |                    | $I_{CMAX DC}$ | 50            | mA        |
| $I_{CMAX}$                                   | $t < 1 \text{ ms}$ | $I_{CMAX}$    | 100           | mA        |
| Power dissipation                            |                    | $P_{diss}$    | 150           | mW        |
| Derate linearly from 25 °C                   |                    |               | 2             | mW/°C     |
| <b>COUPLER</b>                               |                    |               |               |           |
| Isolation test voltage                       |                    | $V_{ISO}$     | 4000          | $V_{RMS}$ |
| Total package dissipation (LED and detector) |                    | $P_{tot}$     | 240           | mW        |
| Derate linearly from 25 °C                   |                    |               | 3.3           | mW/°C     |
| Operating temperature                        |                    | $T_{amb}$     | - 55 to + 100 | °C        |
| Storage temperature                          |                    | $T_{stg}$     | - 55 to + 150 | °C        |
| Soldering time                               | at 260 °C          |               | 10            | s         |

## Note

$T_{amb} = 25 \text{ °C}$ , unless otherwise specified.

Stresses in excess of the absolute maximum ratings can cause permanent damage to the device. Functional operation of the device is not implied at these or any other conditions in excess of those given in the operational sections of this document. Exposure to absolute maximum ratings for extended periods of the time can adversely affect reliability.

| ELECTRICAL CHARACTERISTICS            |                                           |      |             |      |      |      |               |
|---------------------------------------|-------------------------------------------|------|-------------|------|------|------|---------------|
| PARAMETER                             | TEST CONDITION                            | PART | SYMBOL      | MIN. | TYP. | MAX. | UNIT          |
| <b>INPUT</b>                          |                                           |      |             |      |      |      |               |
| Forward voltage                       | $I_F = 10 \text{ mA}$                     |      | $V_F$       |      | 1.3  | 1.5  | V             |
| Reverse current                       | $V_R = 6 \text{ V}$                       |      | $I_R$       |      | 0.1  | 100  | $\mu\text{A}$ |
| Capacitance                           | $V_R = 0 \text{ V}$                       |      | $C_O$       |      | 13   |      | pF            |
| <b>OUTPUT</b>                         |                                           |      |             |      |      |      |               |
| Collector emitter breakdown voltage   | $I_C = 100 \text{ }\mu\text{A}$           |      | $BV_{CEO}$  | 70   |      |      | V             |
| Emitter collector breakdown voltage   | $I_E = 100 \text{ }\mu\text{A}$           |      | $BV_{ECO}$  | 7    | 10   |      | V             |
| Collector emitter leakage current     | $V_{CE} = 10 \text{ V}$                   |      | $I_{CEO}$   |      | 5    | 50   | nA            |
| <b>COUPLER</b>                        |                                           |      |             |      |      |      |               |
| Saturation voltage, collector emitter | $I_C = 2 \text{ mA}, I_F = 10 \text{ mA}$ |      | $V_{CEsat}$ |      |      | 0.4  | V             |
| Capacitance, input to output          |                                           |      | $C_{IO}$    |      | 0.5  |      | pF            |
| Resistance, input to output           |                                           |      | $R_{IO}$    |      | 100  |      | G $\Omega$    |

## Note

$T_{amb} = 25 \text{ °C}$ , unless otherwise specified.

Minimum and maximum values were tested requirements. Typical values are characteristics of the device and are the result of engineering evaluations. Typical values are for information only and are not part of the testing requirements.



# IL205AT/206AT/207AT/208AT

Optocoupler, Phototransistor Output, Vishay Semiconductors  
with Base Connection in SOIC-8 Package

| CURRENT TRANSFER RATIO |                                             |         |        |      |      |      |      |
|------------------------|---------------------------------------------|---------|--------|------|------|------|------|
| PARAMETER              | TEST CONDITION                              | PART    | SYMBOL | MIN. | TYP. | MAX. | UNIT |
| Current transfer ratio | $I_F = 10 \text{ mA}, V_{CE} = 5 \text{ V}$ | IL205AT | CTR    | 40   |      | 80   | %    |
|                        |                                             | IL206AT | CTR    | 63   |      | 125  | %    |
|                        |                                             | IL207AT | CTR    | 100  |      | 200  | %    |
|                        |                                             | IL208AT | CTR    | 100  |      | 320  | %    |
|                        | $I_F = 1 \text{ mA}, V_{CE} = 5 \text{ V}$  | IL205AT | CTR    | 13   | 25   |      | %    |
|                        |                                             | IL206AT | CTR    | 22   | 40   |      | %    |
|                        |                                             | IL207AT | CTR    | 34   | 60   |      | %    |
|                        |                                             | IL208AT | CTR    | 56   | 95   |      | %    |

| SWITCHING CHARACTERISTICS |                                                                    |      |                   |      |      |      |               |
|---------------------------|--------------------------------------------------------------------|------|-------------------|------|------|------|---------------|
| PARAMETER                 | TEST CONDITION                                                     | PART | SYMBOL            | MIN. | TYP. | MAX. | UNIT          |
| Switching time            | $I_C = 2 \text{ mA}, R_L = 100 \Omega,$<br>$V_{CC} = 10 \text{ V}$ |      | $t_{on}, t_{off}$ |      | 3    |      | $\mu\text{s}$ |

| SAFETY AND INSULATION RATINGS                           |                        |        |      |           |      |      |    |
|---------------------------------------------------------|------------------------|--------|------|-----------|------|------|----|
| PARAMETER                                               | TEST CONDITION         | SYMBOL | MIN. | TYP.      | MAX. | UNIT |    |
| Climatic classification<br>(according to IEC 68 part 1) |                        |        |      | 55/100/21 |      |      |    |
| Comparative tracking index                              |                        | CTI    | 175  |           | 399  |      |    |
| $V_{IOTM}$                                              |                        |        | 6000 |           |      |      | V  |
| $V_{IORM}$                                              |                        |        | 560  |           |      |      | V  |
| $P_{SO}$                                                |                        |        |      |           | 350  |      | mW |
| $I_{SI}$                                                |                        |        |      |           | 150  |      | mA |
| $T_{SI}$                                                |                        |        |      |           | 165  |      | °C |
| Creepage                                                |                        |        | 4    |           |      |      | mm |
| Clearance                                               |                        |        | 4    |           |      |      | mm |
| Insulation thickness, reinforced rated                  | per IEC 60950 2.10.5.1 |        | 0.2  |           |      |      | mm |

### Note

As per IEC 60747-5-2, §7.4.3.8.1, this optocoupler is suitable for “safe electrical insulation” only within the safety ratings. Compliance with the safety ratings shall be ensured by means of protective circuits.

## TYPICAL CHARACTERISTICS

$T_{amb} = 25\text{ }^{\circ}\text{C}$ , unless otherwise specified

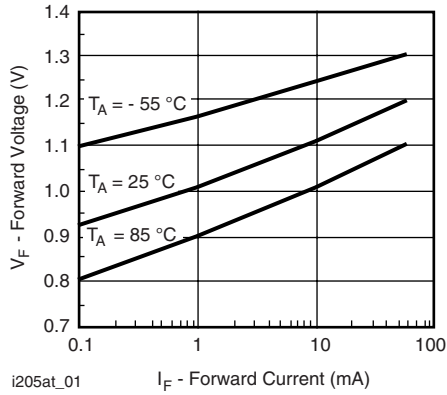


Fig. 1 - Forward Voltage vs. Forward Current

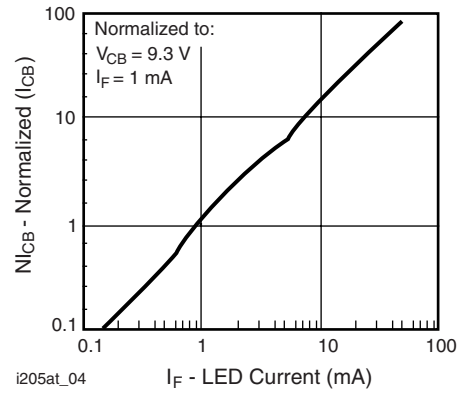


Fig. 4 - Normalized Collector-Base Photocurrent vs. LED Current

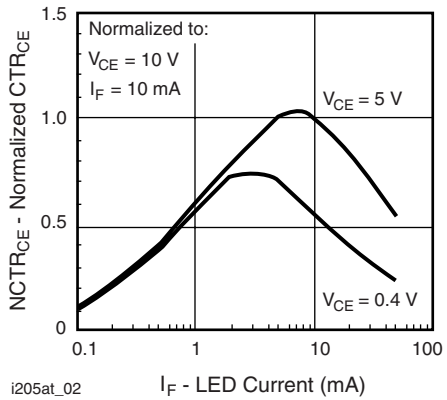


Fig. 2 - Normalized Non-Saturated and Saturated  $CTR_{CE}$  vs. LED Current

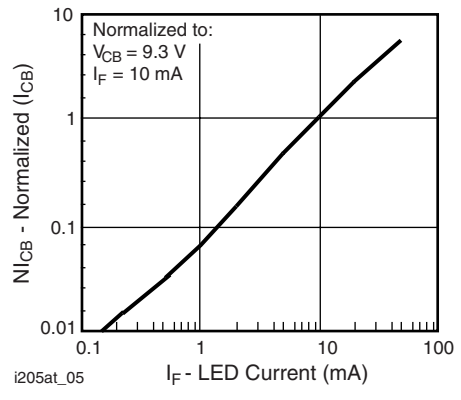


Fig. 5 - Normalized Collector-Base Photocurrent vs. LED Current

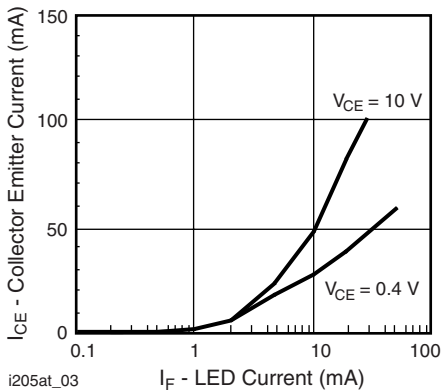


Fig. 3 - Collector Emitter Current vs. LED Current

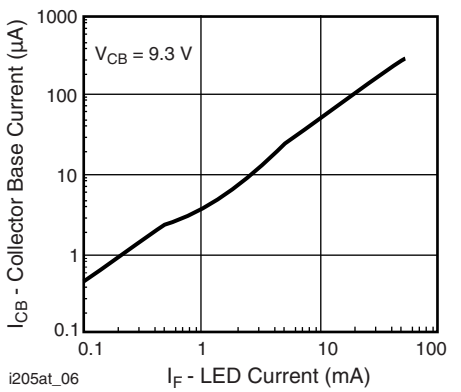


Fig. 6 - Collector Emitter Photocurrent vs. LED Current

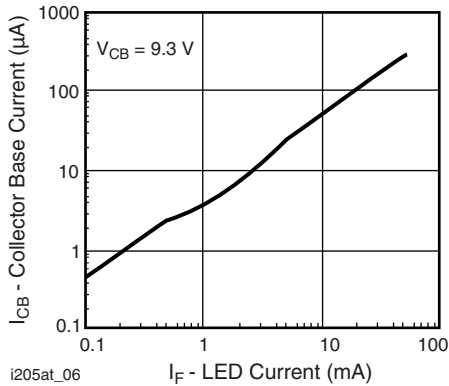


Fig. 7 - Collector Emitter Photocurrent vs. LED Current

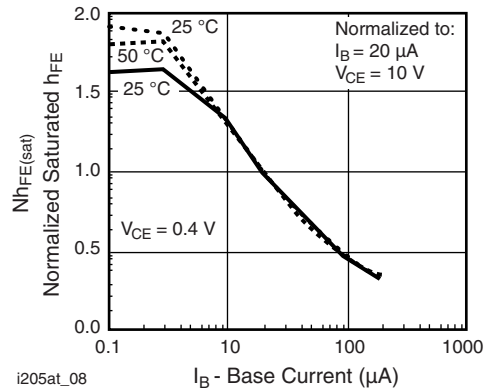


Fig. 9 - Typical Switching Characteristics vs. Base Resistance (Saturated Operation)

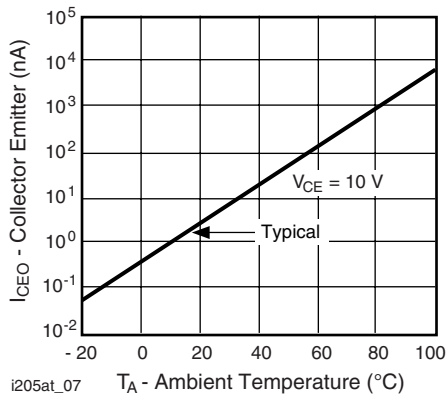
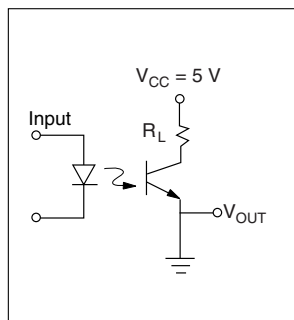


Fig. 8 - Base Current vs.  $I_F$  and  $h_{FE}$



i205at\_11

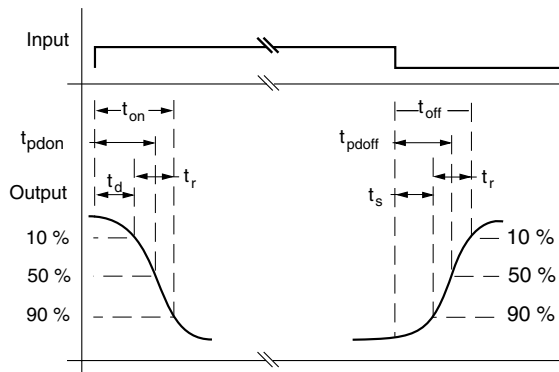


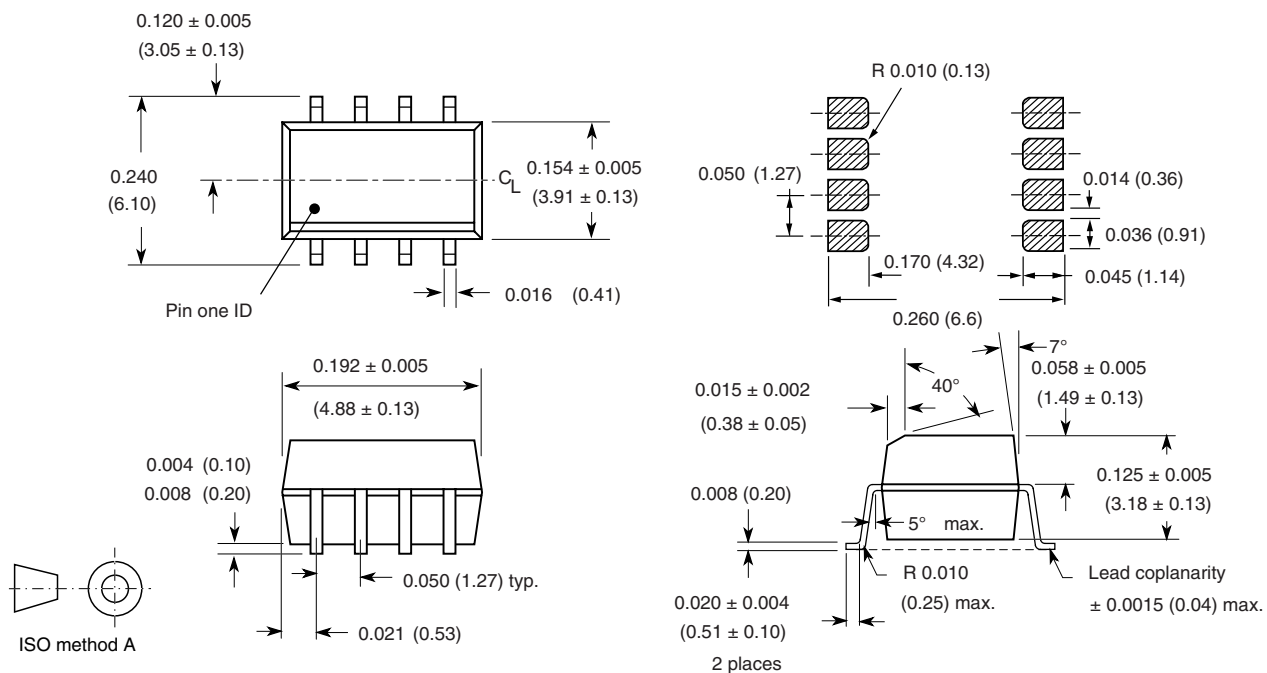
Fig. 10 Switching Test Circuit

# IL205AT/206AT/207AT/208AT



Vishay Semiconductors Optocoupler, Phototransistor Output,  
with Base Connection in SOIC-8 Package

## PACKAGE DIMENSIONS in inches (millimeters)



i178003



## **OZONE DEPLETING SUBSTANCES POLICY STATEMENT**

It is the policy of Vishay Semiconductor GmbH to

1. Meet all present and future national and international statutory requirements.
2. Regularly and continuously improve the performance of our products, processes, distribution and operating systems with respect to their impact on the health and safety of our employees and the public, as well as their impact on the environment.

It is particular concern to control or eliminate releases of those substances into the atmosphere which are known as ozone depleting substances (ODSs).

The Montreal Protocol (1987) and its London Amendments (1990) intend to severely restrict the use of ODSs and forbid their use within the next ten years. Various national and international initiatives are pressing for an earlier ban on these substances.

Vishay Semiconductor GmbH has been able to use its policy of continuous improvements to eliminate the use of ODSs listed in the following documents.

1. Annex A, B and list of transitional substances of the Montreal Protocol and the London Amendments respectively.
2. Class I and II ozone depleting substances in the Clean Air Act Amendments of 1990 by the Environmental Protection Agency (EPA) in the USA
3. Council Decision 88/540/EEC and 91/690/EEC Annex A, B and C (transitional substances) respectively.

Vishay Semiconductor GmbH can certify that our semiconductors are not manufactured with ozone depleting substances and do not contain such substances.

We reserve the right to make changes to improve technical design  
and may do so without further notice.

Parameters can vary in different applications. All operating parameters must be validated for each customer application by the customer. Should the buyer use Vishay Semiconductors products for any unintended or unauthorized application, the buyer shall indemnify Vishay Semiconductors against all claims, costs, damages, and expenses, arising out of, directly or indirectly, any claim of personal damage, injury or death associated with such unintended or unauthorized use.

Vishay Semiconductor GmbH, P.O.B. 3535, D-74025 Heilbronn, Germany



## Disclaimer

All product specifications and data are subject to change without notice.

Vishay Intertechnology, Inc., its affiliates, agents, and employees, and all persons acting on its or their behalf (collectively, "Vishay"), disclaim any and all liability for any errors, inaccuracies or incompleteness contained herein or in any other disclosure relating to any product.

Vishay disclaims any and all liability arising out of the use or application of any product described herein or of any information provided herein to the maximum extent permitted by law. The product specifications do not expand or otherwise modify Vishay's terms and conditions of purchase, including but not limited to the warranty expressed therein, which apply to these products.

No license, express or implied, by estoppel or otherwise, to any intellectual property rights is granted by this document or by any conduct of Vishay.

The products shown herein are not designed for use in medical, life-saving, or life-sustaining applications unless otherwise expressly indicated. Customers using or selling Vishay products not expressly indicated for use in such applications do so entirely at their own risk and agree to fully indemnify Vishay for any damages arising or resulting from such use or sale. Please contact authorized Vishay personnel to obtain written terms and conditions regarding products designed for such applications.

Product names and markings noted herein may be trademarks of their respective owners.